

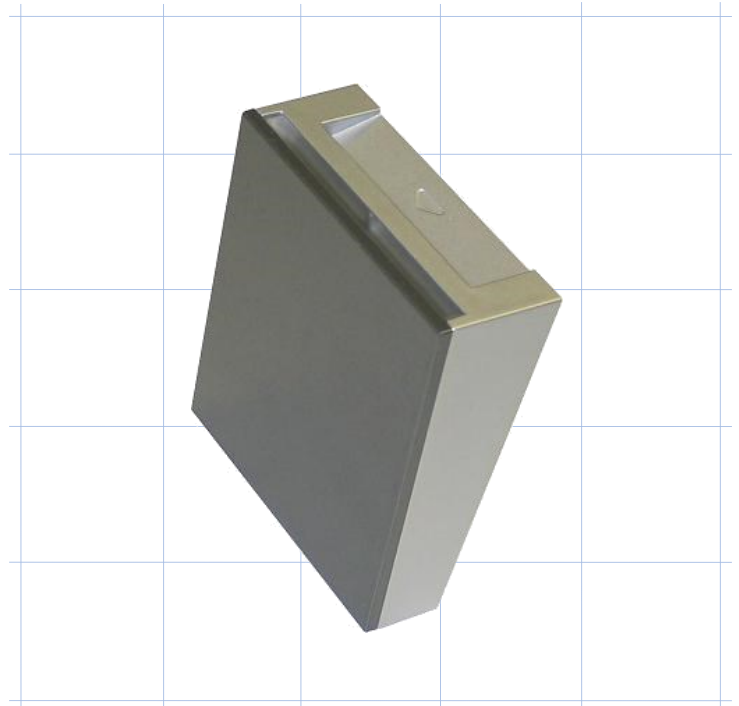
- Allows a significant reduction in power consumption
- Cuts electric circuits when removing card
- Mechanically operated with any type of card
- Incorporates light for easy location in the dark
- Designed to be installed in a standard electrical box (square or rounded)
- No need to communicate with portable programmer

Weight: 110gr
 Dimensions: 87 x 76 x 30 mm (H x W x D)
 Packing: Plastic bag
 Standard colours:



Power Consumption: Nominal 16mA, Max. 23mA
 Power Supply:
 Voltage: 110 or 230 Vac. Tolerance 10%
 Frequency: 50 – 60 Hz
 Output: 1 Relay
 Power cut-off: 12A, 230V~,cos φ = 1
 8A, 230V~,cos φ = 0,6
 Incandescent Max. Load: 10A
 Halogen Max. Load: 10A

IMPORTANT: Halogen, electronic fluorescent and low consumption lamps present a very high consumption (up to 20Amp) at switch-on and switch-off time, often damaging relay contacts. If this type of lamps are being used, Onity recommends to check if the use of a contactor is needed.



Connections Diagram

